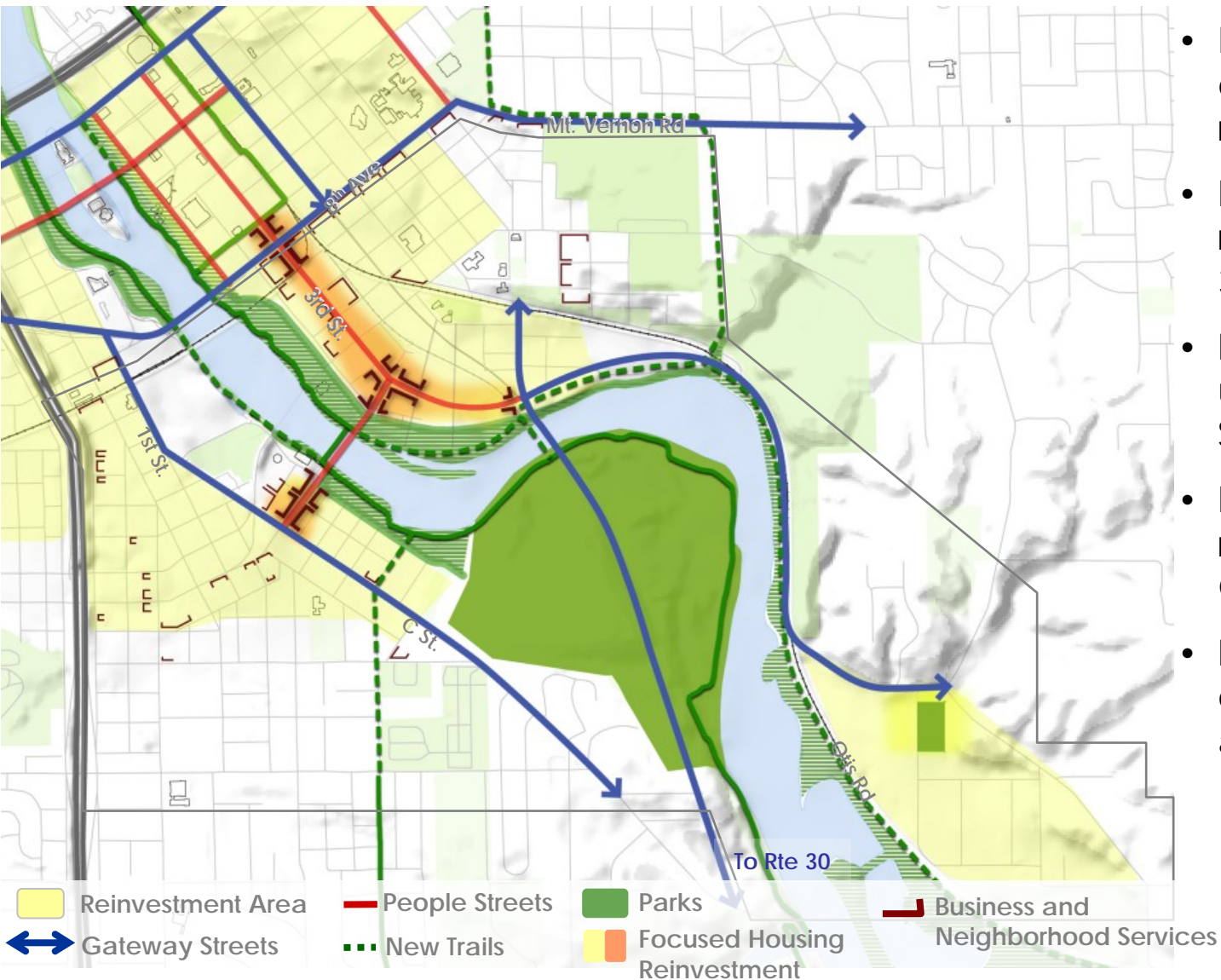
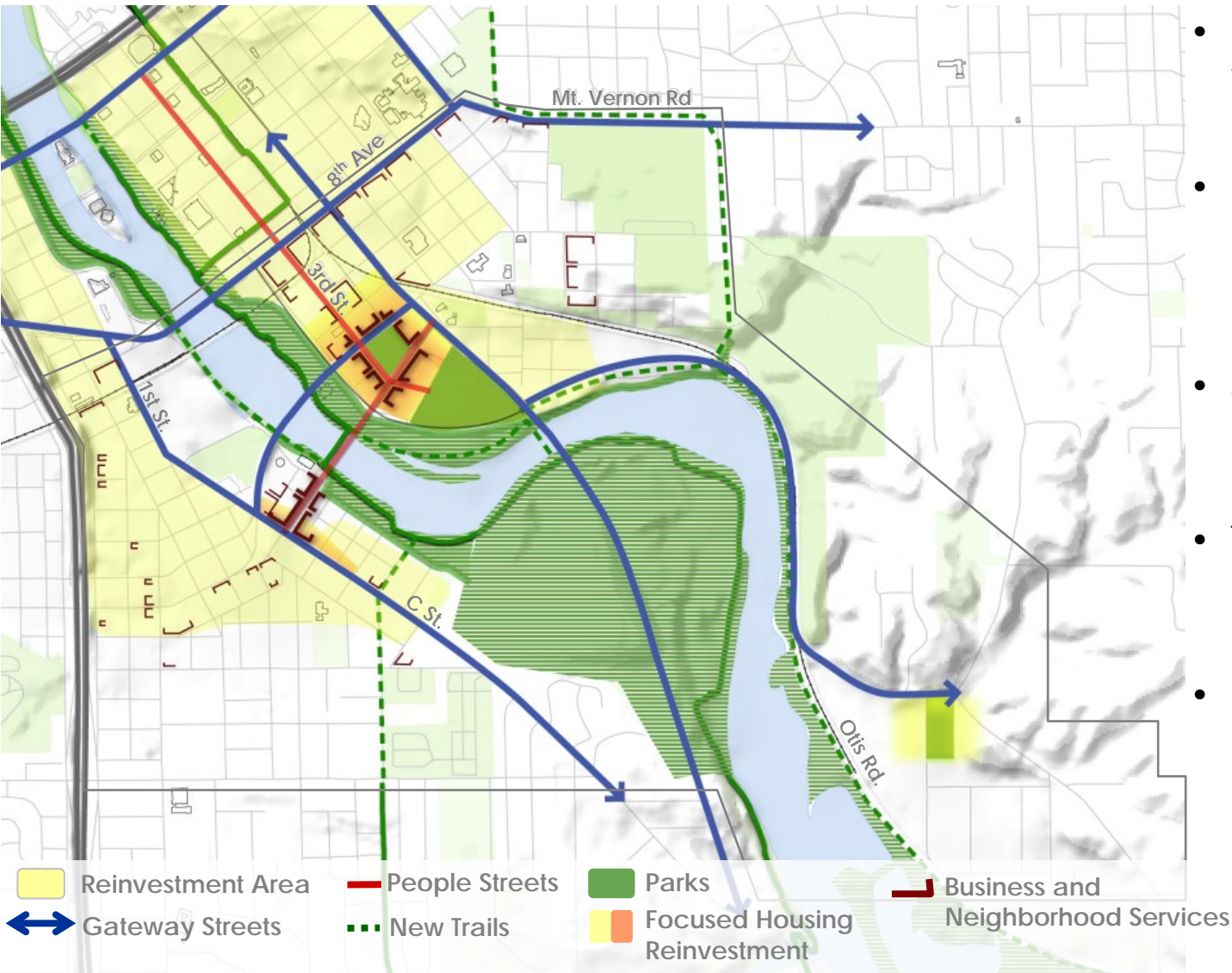


Scenario One



- Enhanced connection across river and to Otis Road
- Focused reinvestment along 3rd St
- Investment in mixed use development at Sinclair site
- Focused housing reinvestment around Czech Village
- Landfill area converted into an active park

Scenario Two



- Enhanced connection to downtown through 5th Street
- Focused reinvestment in expansion of a new district in New Bohemia
- Sinclair reutilized as a destination/ public park
- The landfill cleaned and protected as natural area
- Reinvestment in existing Czech Village and New Bohemia